



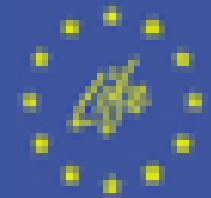
Vils River



winners



3. Schwarzwasser-Torrent Projekt



LIFE-PROJEKT

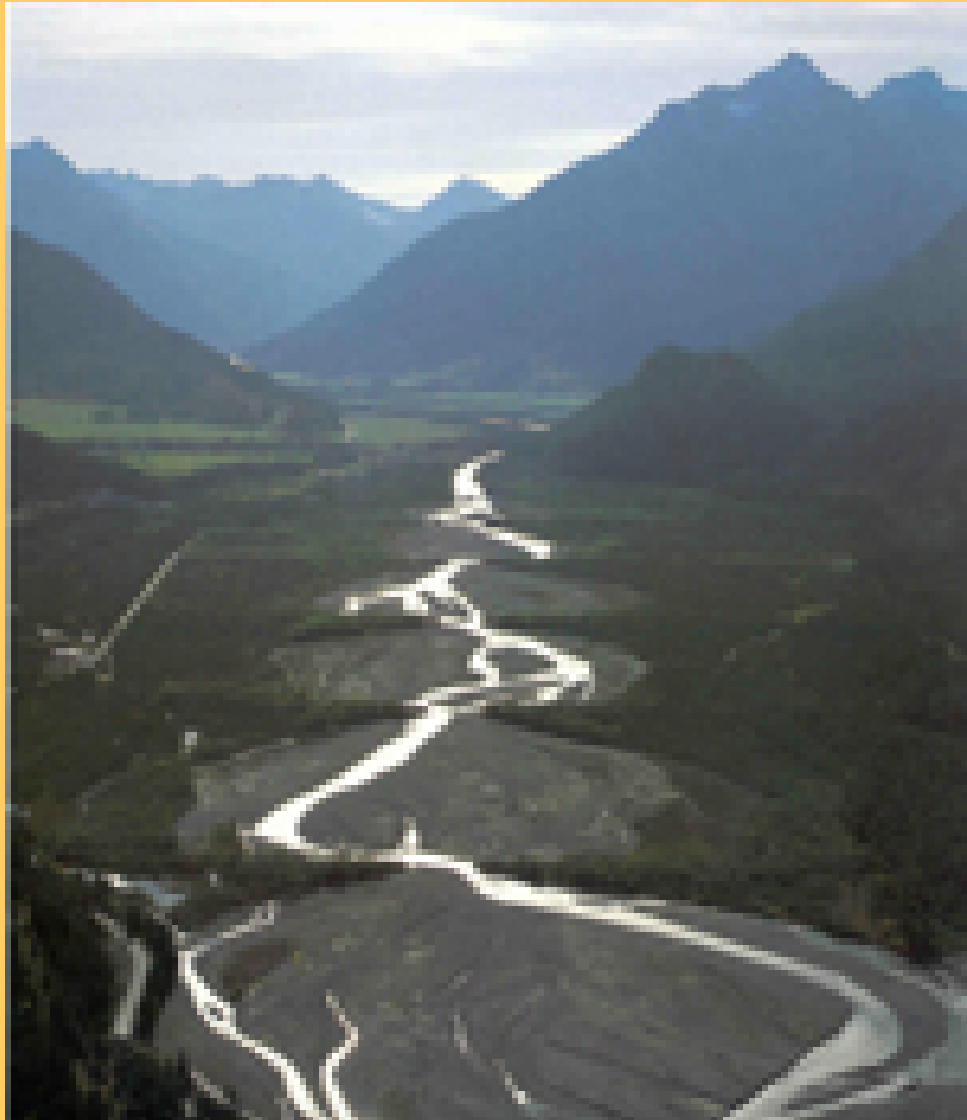
Wildfluggelandschaft Tiroler Larch

Die Europäische Union unterstützt dieses Projekt, indem sie 50 % der Projektkosten mit Mitteln aus dem Programm LIFE-Natur fördert. Der Aufbau des europäischen Schutzgebietsnetzwerkes NATURA 2000, das auf dem dauerhaften Erhalt der Lebensräume gefährdeter Tier- und Pflanzenarten abzielt, wird auch finanziell unterstützt werden.

PROJEKTBEGINN: 2001 – 2004
Dauer: 1,50 Mio. €

Projektpartner





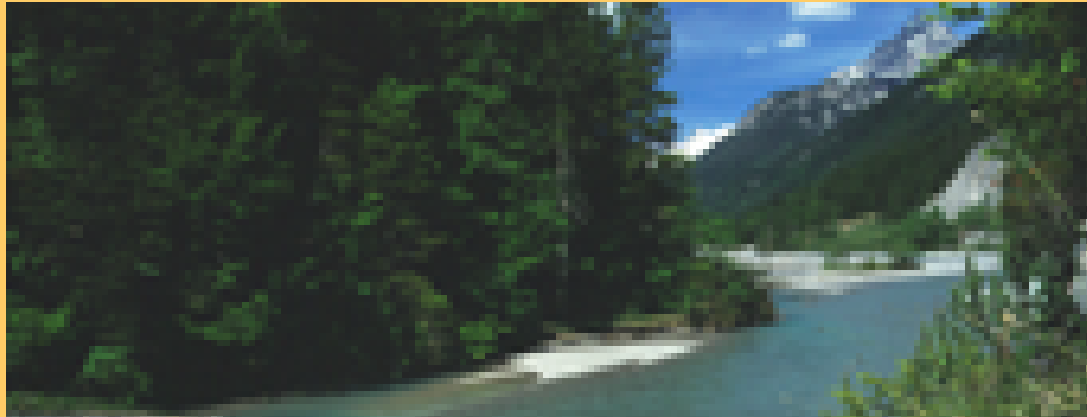
The Lech River

One of the last torrential rivers
in Austria

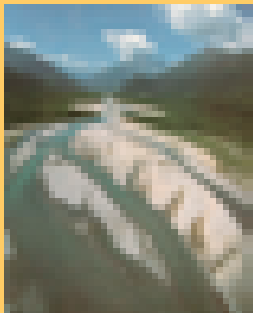
Tributary Schwarzwasser-torren



Groins at the „Pearlchain“



Schwarzwasser -torrent



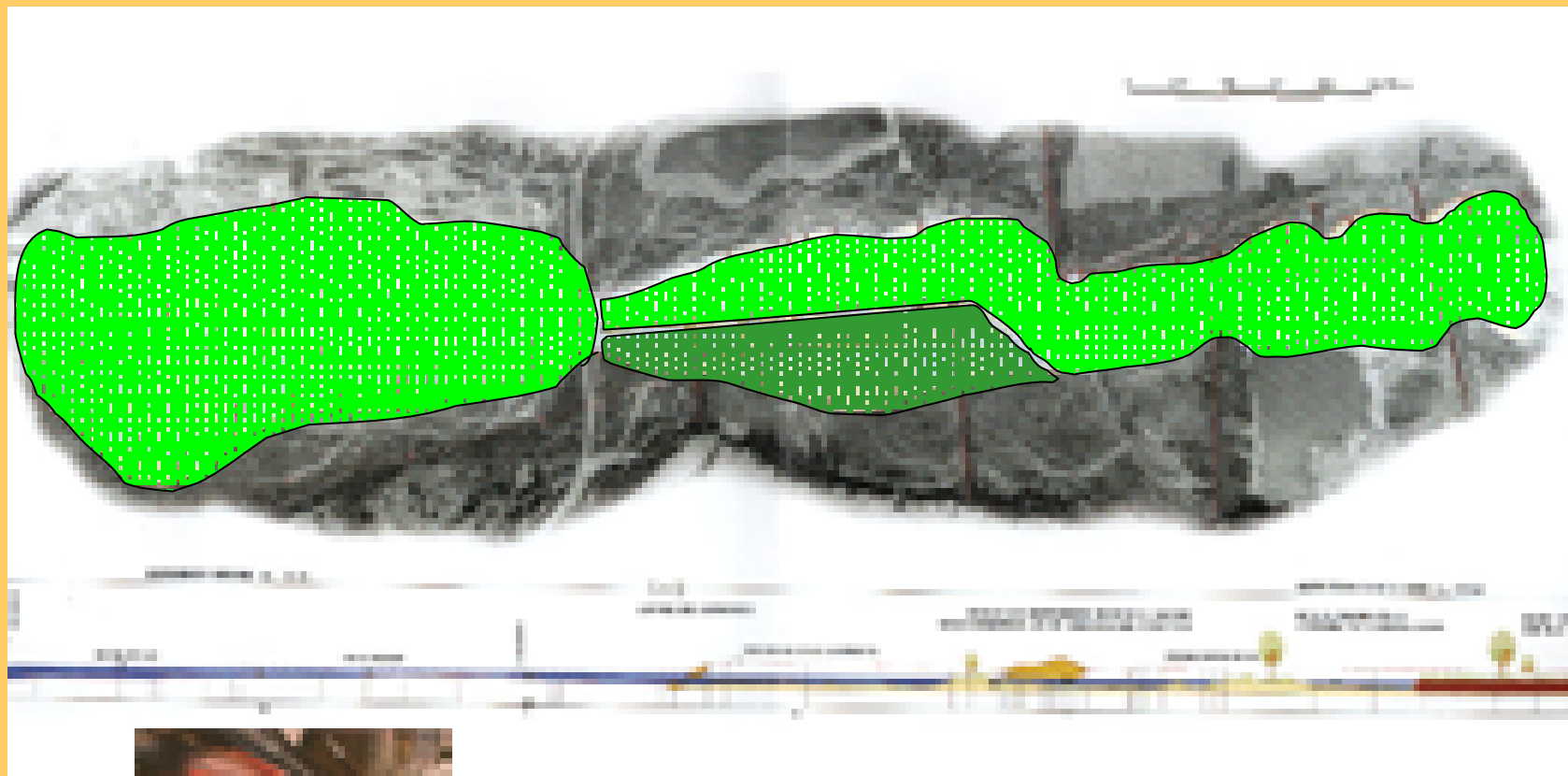
winners



3. Lech-River Project



Removing spurs and embankments



winners

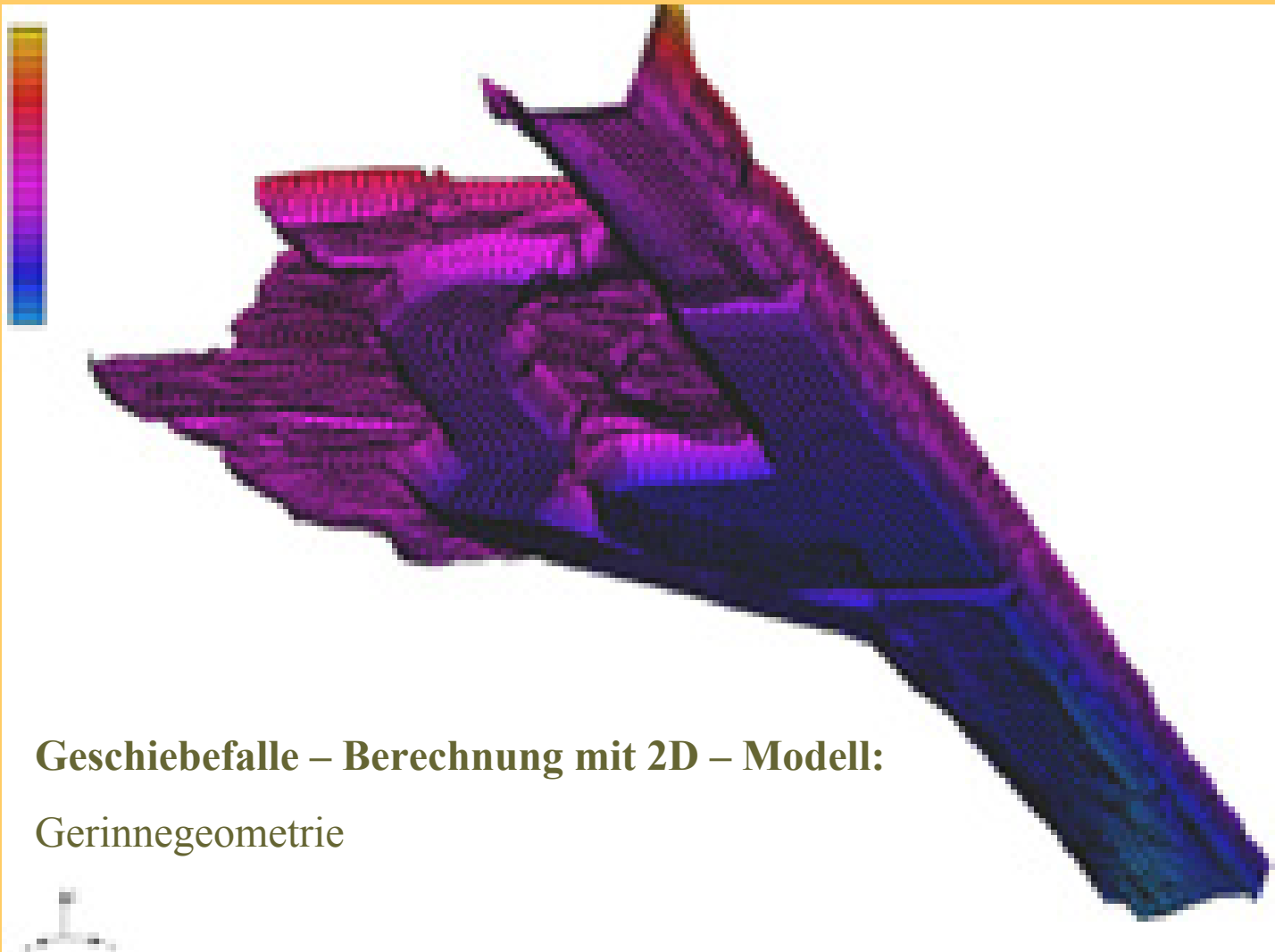
Planning a sediment trap





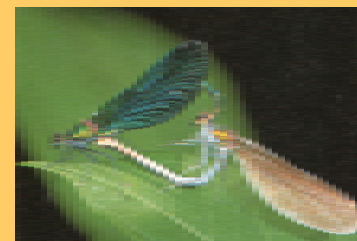
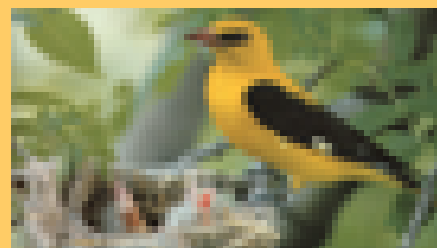
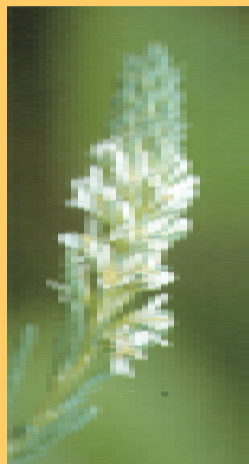
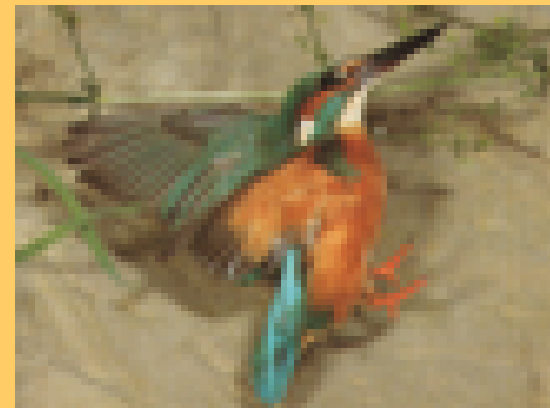
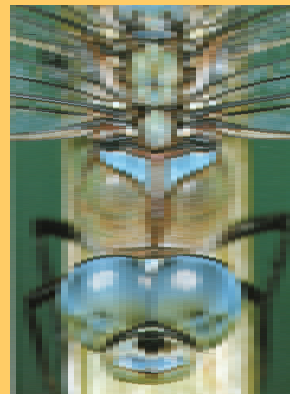
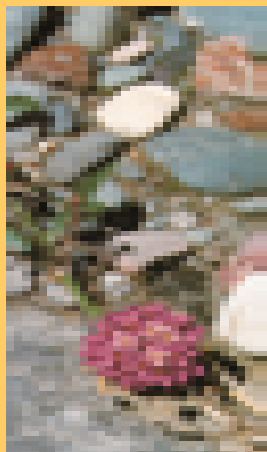
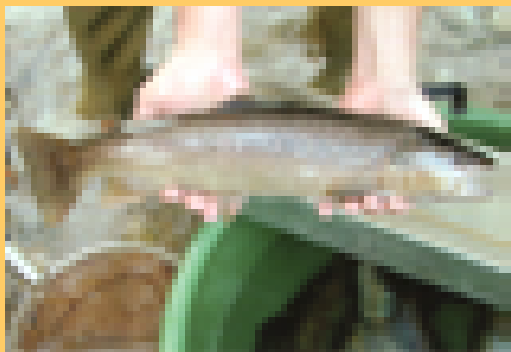
Modelling in the lab

Modelling on the PC





Winners





The European Water Framework Directive (WFD)

The EU Water Framework Directive (WFD) is a bold and forward-looking instrument that will have far reaching consequences for future management of water and aquatic ecosystems throughout Europe. The central feature of the WFD is the development of integrated river basin management plans. These plans will be instrumental in ensuring the environmental objective of the WFD, "good water status", is achieved and maintained for all Community waters by 2015.



The European Water Framework Directive (WFD)

Five elements for effective integrated river basin planning

Five key cross-cutting issues need to be systematically considered for the different tasks to be performed during the river basin planning process, e.g. defining river basin districts, identifying key water management issues, assessing the most cost-effective set of measures for achieving objectives or developing monitoring programmes.



The European Water Framework Directive (WFD)

The First Element:

.Integration between organisations, economic sectors and disciplines dealing with water management issues is required for ensuring efficient and cost-effective river basin planning. This is especially relevant for international river basins. Also, other EU legislation, policy and financial instruments are to be integrated with water policy to remove or minimise obstacles to sustainable water management.



The European Water Framework Directive (WFD)

The second Element:

.The river basin is clearly recognised as the basic planning **scale** for water management measures. The great diversity in river basin sizes means approaches suitable to one location are not automatically transferable elsewhere, although the same basic planning principles must apply. Coherence is required between the processes developed at different spatial scales, i.e. reconciling top down and bottom up approaches to ensure environmental objectives are effectively met.



The European Water Framework Directive (WFD)

The Third Element:

.Timing of implementation is considered as critical. Deadlines for achieving the objectives of the WFD are extremely challenging. But they must not be seen as a step-by-step timetable for implementation as many tasks will effectively be required before such deadlines. A general lesson on timing? Better start implementing early but imperfectly.



The European Water Framework Directive (WFD)

The Fourth Element:

Information, consultation and **participation** of the public and stakeholders are key elements of the process that will lead to successful river basin planning. Provision of transparent and accessible information, together with genuine opportunities for participation in planning and decision-making, should be prioritised from the start. Participation needs to be adapted to the appropriate scale, target groups and activities, and managed carefully to ensure expectations from all sides are clear and can be fulfilled.



The European Water Framework Directive (WFD)

The Fifth Element:

..**Capacity** among all relevant actors needs to be maximised. Capacity building, starting with awareness raising, is required for officials, planners and administrators, but also for economic sectors, local authorities and NGOs. Allocating adequate financial and human resources to capacity building and participation process will be key to implementing the WFD in particular for countries of Central and Eastern Europe future members of the EU.



Thank You for Your kindly Attention



